

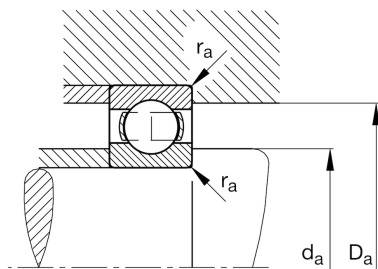
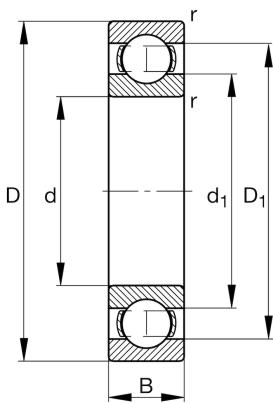
FAG

**6030-M**

Deep groove ball bearing

Schaeffler ID:  
0167186660000Deep groove ball bearing 60..-M, single  
row, solid brass cage

## Technical information

**Main Dimensions & Performance Data**

d	150 mm	Bore diameter
D	225 mm	Outside diameter
B	35 mm	Width
$C_r$	131.000 N	Basic dynamic load rating, radial
$C_{0r}$	124.000 N	Basic static load rating, radial
$C_{ur}$	5.600 N	Fatigue load limit, radial
$n_G$	5.100 1/min	Limiting speed
$n_{gr}$	3.850 1/min	Reference speed
	4,894 kg	Weight

**Dimensions**

$r_{min}$	2,1 mm	Minimum chamfer dimension
$D_1$	201,4 mm	Shoulder diameter outer ring
$d_1$	174,4 mm	Shoulder diameter inner ring

**Mounting dimensions**

$d_{a min}$	160,2 mm	Minimum diameter shaft shoulder
$D_{a max}$	214,8 mm	Maximum diameter of housing shoulder
$r_{a max}$	2,1 mm	Maximum fillet radius

**Calculation factors**

$f_0$	16	Calculation factor
-------	----	--------------------

**Temperature range**

$T_{min}$	-30 °C	Operating temperature min.
$T_{max}$	150 °C	Operating temperature max.